

love  
select



**SWIFT**  
CREATING SMILES FOR LIFE



love life

LOVE SWIFT

## UNDER OUR OWN BLUE SKY

Take me to a place that I call Here,  
Hold me in a time that I call This  
The air is clean, the light is clear  
And now an outdoor kind of bliss  
Draws me to a spot I really love;  
The door wide open, the kettle on,  
A family that fits me like a glove.

A moment's pause for those who've gone  
Who still remain in the mind and heart.

And now, under our very own blue sky  
The rest of our lives can slowly start  
And our spirits can begin to fly  
With memories of where we've been,  
Those mornings we have yet to know  
Those brand new vistas all unseen.  
Love life, I say. And now, let's go!

©Ian McMillan 2021

love life  
LOVE SWIFT

# Contents

PG05 LOVE SELECT - FOR EVERYDAY TO HOLIDAY

PG07 HIGHLIGHTS

PG12 EXTERIOR STYLE

PG14 FEATURES

PG16 FABRIC OPTIONS

PG18 TECHNICAL SPECIFICATION

PG20 WHERE TO BUY YOUR SELECT





Love  
Select

For everyday  
to holiday



SELECT

7'5" WIDE

Featuring the new Fiat Series 8 Ducato panel van in on-trend Lanzarote Grey with stylish enhanced graphics scheme, the Select range makes a real statement this year. With four models available, covering two, three and four berth options, you will be ready for wherever the road may take you.

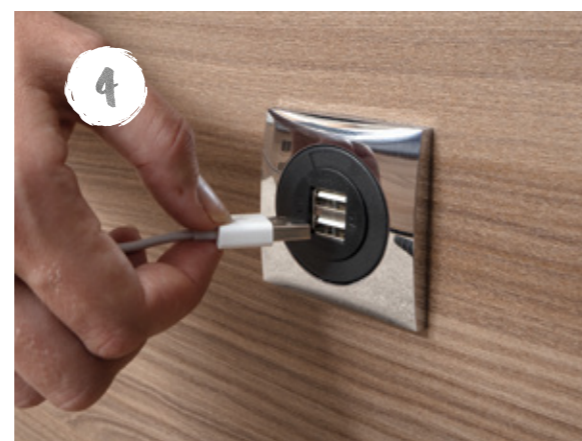
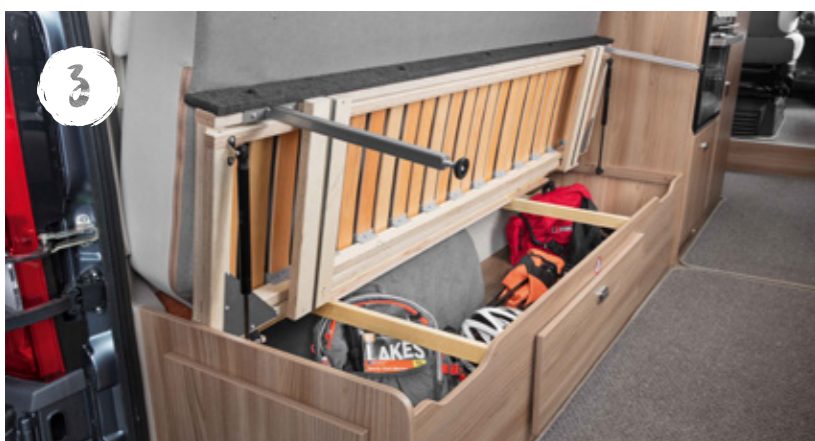


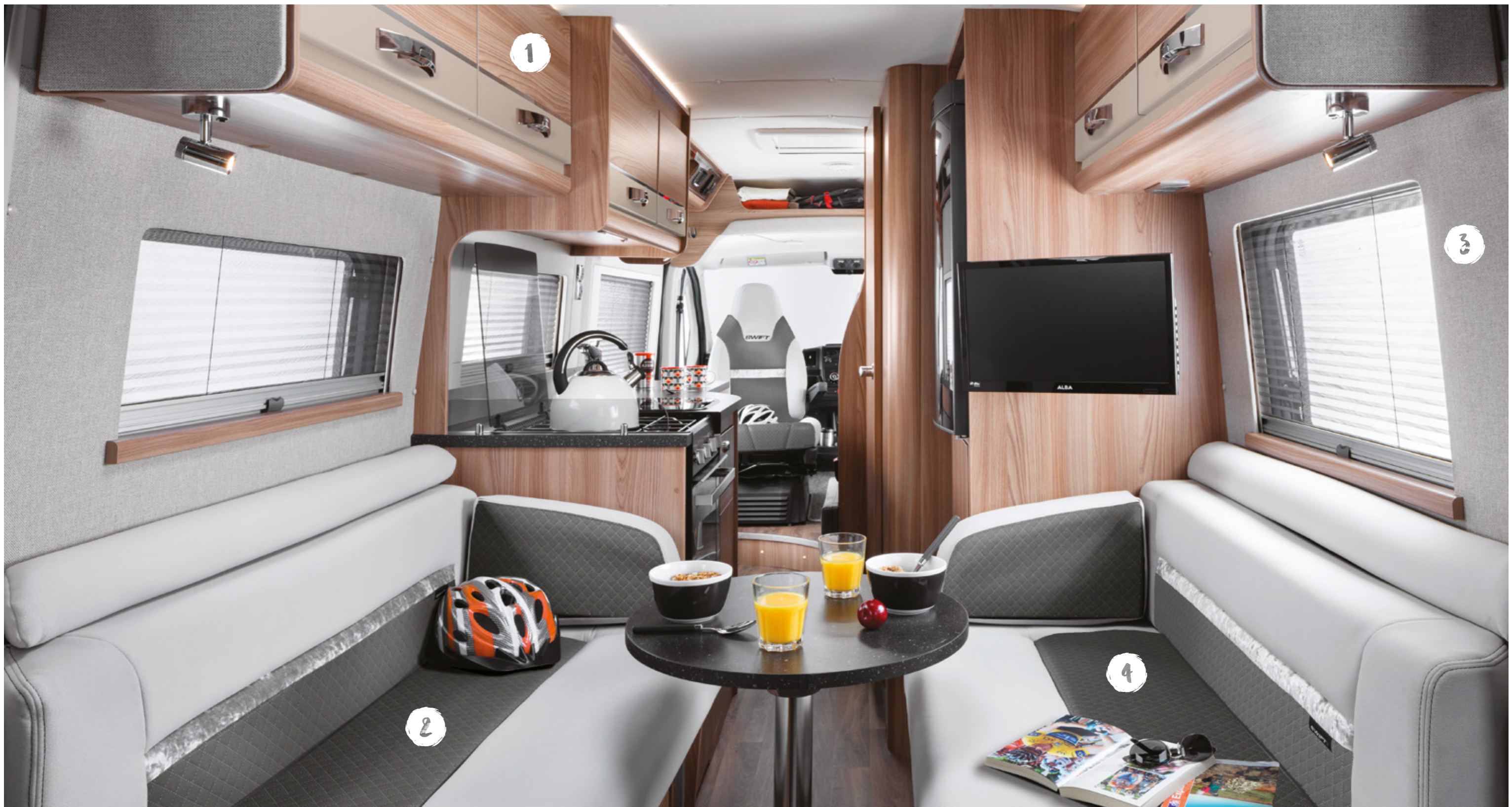
# Highlights

For maximum versatility wherever the adventure takes you, the Swift Select panel van is ready to tackle everyday use, sport, relaxing holidays or business. As functional as it is comfortable, Select offers sleek styling and a panoramic sunroof to let the sunshine flood in.

- 1 Main table with rotating leaf extension and second rear table.\*
- 2 Double glazed windows with pleated cassette blinds and flyscreens.
- 3 Lounge seats with gas supported underseat storage for easy access.\*
- 4 Chrome effect plugs and USB sockets for easy charging.
- 5 Fully fitted kitchen with Thetford combination thermostatic oven and grill^, two or three burner gas hob with glass lid and a stainless steel sink\*.
- 6 85L Dometic fridge with 3-way power.

\*Model specific. ^Smev mini grill (144 & 164)





**1** Oyster Grey locker doors with over-locker LED ambient lighting.

**2** Modern Eider soft furnishings and Aralie Sen woodgrain create an inviting living space.

**3** Hardwearing Savoy fabric wall covering with stain resistant finish.

**4** Plush seating which converts into rear double bed for flexible usage.\*

**5** Control and monitor onboard systems with a simplified control unit.

**6** Dual fuel blown air heating with Truma Combi 6 boiler for all year round warmth.

\*164 model has fixed rear bed



1

Fully fitted washroom with Thetford cassette toilet, washbasin and shower.

2

Mirrored vanity cupboard for convenience and storage.

3

**NEW** 'Silver Techno' dashboard with 7" colour touchscreen display, DAB radio with Apple Carplay™/Android Auto™, USB point and Bluetooth.

4

Driver and passenger seats with swivel function to maximise living space. Driver and passenger seats with swivel function to maximise living space.

5

Reversing sensors for a smoother parking experience.

6

16" alloy wheels.



Love  
Style



1

3



2

5

4

6



7

8

**1** NEW Fiat Series 8 Ducato panel van insulated with high performance 3M 'Thinsulate'.

**2** NEW Lanzarote Grey exterior finish with complementary graphics and body coloured bumper.

**3** NEW Thule pull-out awning now fitted as standard.

**4** Long wheel base 3.5 tonnes on 122 and 144 and extra-long wheel base 3.5 tonnes on 164 and 184.

**5** NEW external BBQ and cold water shower points.

**6** Electric side entrance step with LED side entrance light.

**7** Overcab panoramic glass sunroof to flood the living area with natural light.

**8** NEW 100W solar panel and regulator now fitted as standard.

# FEATURES

## EXTERIOR & CONSTRUCTION

- European Whole Vehicle Type Approval ensures compliance with strict weight, dimension and safety regulations
- **NEW** Fiat Series 8 Ducato panel van in **NEW** Lanzarote Grey with body coloured bumper and black cab trims (light bezels, grille and skid plate)
- EN 1646-1 Grade 3 classification for heating and thermal insulation, for sub-zero ambient temperatures, confirmed by cold chamber testing
- Body insulated with high performance 3M 'Thinsulate'
- **NEW** Euro 6D Final 140bhp 2.2 litre engine with **NEW** 6-speed manual gearbox and ESC & Eco packs as standard
  - ESC includes: anti-slip regulation (ASR), roll over mitigation (ROM) and hill holder
  - ECO includes; stop and start system, smart alternator and more effective energy saving fuel pump
- 75L fuel tank and 19L AD-blue based after treatment system
- Long wheel base 3.5 tonnes on 122, 144
- Extra-long wheel base 3.5 tonnes on 164 & 184
- **NEW** stylish exterior graphics
- 16" alloy wheels
- Fix'n'Go puncture repair kit
- Daytime running lights
- LED side entrance light
- Reversing sensors
- **NEW** 100W solar panel and regulator
- **NEW** roof-mounted pull-out Thule awning
- **NEW** external BBQ point with connection nozzle
- **NEW** external cold water shower point
- Electric side entrance step
- Rain diverter over side entrance door
- Provision for 2x 6kg gas bottles with fitted butane/propane regulator and propane hose
- Flush fitting, double glazed, tinted acrylic windows with night latch ventilation

## DRIVING

- **NEW** 'Silver Techno' dashboard design including:
  - **NEW** 7" touchscreen HD colour display
  - **NEW** steering wheel with steering wheel controls
  - Cruise control
  - **NEW** 3.5" Instrument cluster and infotainment system
  - **NEW** cab light, back lighting & floor lights
  - **NEW** DAB radio with Apple Carplay™ /Android Auto™, USB and Bluetooth
  - **NEW** central area with pocket for smartphone, double USB point and cup holders
  - **NEW** door pockets with bottle holder
  - Cab air-conditioning
  - Driver and passenger airbags
- ABS brakes
- EBD (electronic brake force distribution)
- Immobiliser with rolling code
- Variable power steering
- Electrically adjusted and heated wing mirrors with DAB radio aerial
- Electrically operated and tinted cab windows
- Adjustable headlamp height
- Adjustable steering wheel position
- Pleated cab blinds (front and side blinds)
- Removable and bleachable cab carpet
- Central dash mounted holder for full width tablet with USB point

- Driver and passenger captain chairs both with:
  - Position, height and rake adjustment
  - Swivel base
  - Two armrests
  - Integrated headrest
  - Fully upholstered covers

## LIVING, RELAXING & SLEEPING

- Eider soft furnishing scheme
- Aralie Sen woodgrain and Oyster Grey locker doors with chrome strip and chrome push button handles with matching window sills
- 'Savoy' fabric wall covering with stain resistant finish
- French Oak effect, high impact, scratch resistant floor lino
- Loose fit bleachable habitation carpets
- Forward facing travelling seats (except 122)
- Midi-Heki with flyscreen over front dinette (over rear lounge in 122)
- Double glazed windows with pleated cassette blinds and flyscreens
- Two rear windows with blinds and flyscreens
- Interior formed decor panels to sliding and rear doors
- **NEW** exterior sliding door flyscreen
- Magazine nets and coat hooks (model specific)
- Black branded speakers fitted in roof at rear

## EATING

- Thetford combination thermostatic oven and grill, plus a 3 burner gas hob, all with electronic ignition. Hob features a glass lid with auto gas shut-off functionality (122 and 184)
- Combination Dometic 2 burner hob and stainless steel sink with glass lid and Smev mini grill (144, 164)
- Dometic (Series 8) 85 litre 230V/12V/gas fridge with 3 way power
- Foldaway worktop extension (except 184)
- Stainless steel sink bowl and chrome effect mixer tap (122 & 184)
- Waste bin (except 184)
- Main table with rotating leaf table extension (except 122) with second table at rear (except 164)

## WASHING

- Shower mixer with retainer and separate vanity tap with Ecocamel Jetstorm shower head with on/off button for a powerful shower that uses less water (122)
- Chrome effect mixer tap for vanity and shower (trigger shower head) (144, 164 & 184)
- Mirrored vanity cupboard and fold-away washbasin (122)
- Mirrored vanity cupboard and fixed washbasin (144, 164, 184)
- Thetford cassette toilet with electric flush and 18 litre wheeled tank
- Metal shower curtain track with easyflow operation
- Multi-directional rooflight with flyscreen in washroom

## STORAGE

- Positive locker catches throughout for secure storage on the move with chrome handles
- Lounge seats with gas strut lid support for easy storage access (122, 184)

## UTILITIES

- EC400 Control unit with simple controls for monitoring and managing:
  - Battery selection and battery level meter
  - Selected lighting control
  - Water system controls and tank levels
- Dual fuel blown air heating with Truma Combi 6 boiler (1.8kW electric/6kW gas/6.9kW combined)
- Digital programmable controller for heating and hot water
- Truma 'Crash Sensor Mono' regulator for en-route use of heating and water heating
- Pressurised fresh water system with self-priming pump and accumulator
- 12V exterior point for pump filling of water tank (pump not supplied)
- Insulated 59 litre fresh water tank with tank fill socket (93 litre on 122, 144)
- 41 litre waste water tank (58 litre on 122, 144)
- Electronically operated fresh and waste water drain valves with insulated covers
- Large bore underslung rigid waste pipes
- Winter Pack including tank heaters and pipe insulation
- Fully sealed, long life, 80 Amp-hour (Dir 2006/66/EC) leisure battery
- Mains 230V supply, via easy-access consumer unit, to sockets, fridge, heater, water heater and battery charger/transformer
- 25 metre mains hook-up cable
- 25 Amp/300 Watt charger/transformer for leisure batteries
- Ultra-low energy LED lighting system throughout interior including:
  - Dimmable LED spotlights
  - Over-locker LED lighting

## SAFETY & SECURITY

- VIN CHIP™ identification system concealed within construction to deter theft and aid quick recovery
- Key fob operated remote central locking
- Smoke alarm
- Carbon monoxide alarm

## OPTIONS

### Factory Fit

- Upgrade to 140bhp, 2.2 litre engine with 9 speed full automatic transmission

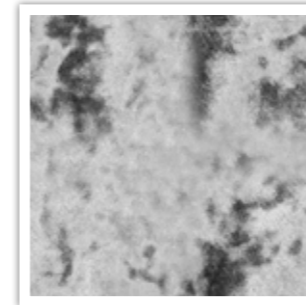
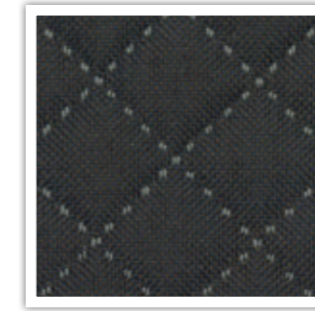
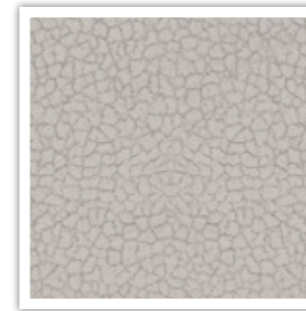




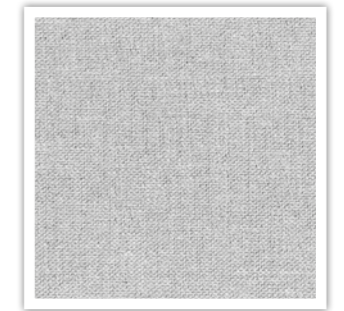
## SOFT FURNISHING SCHEME

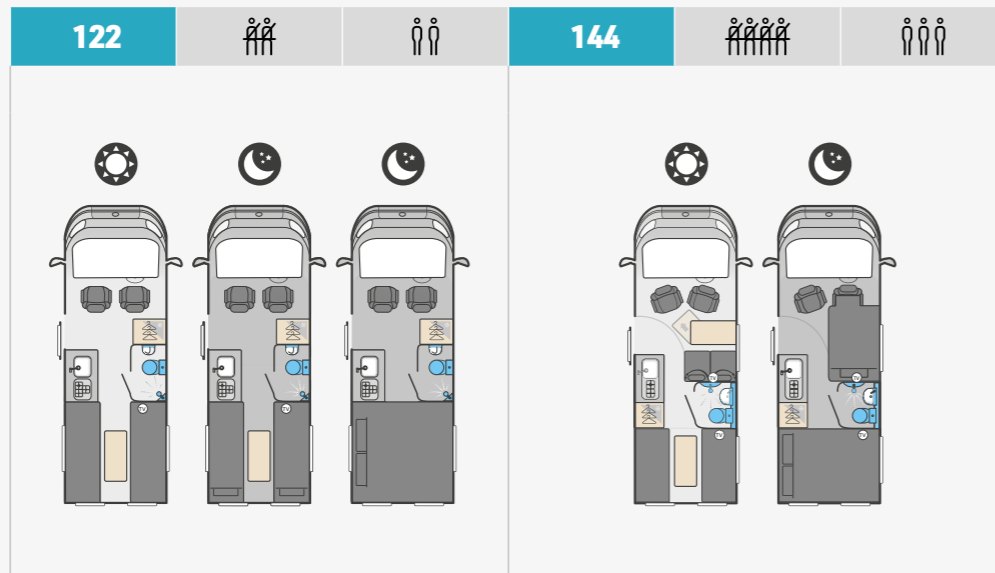
Within the Select range, the **Eider** fabric scheme comes as standard.

### SEATING

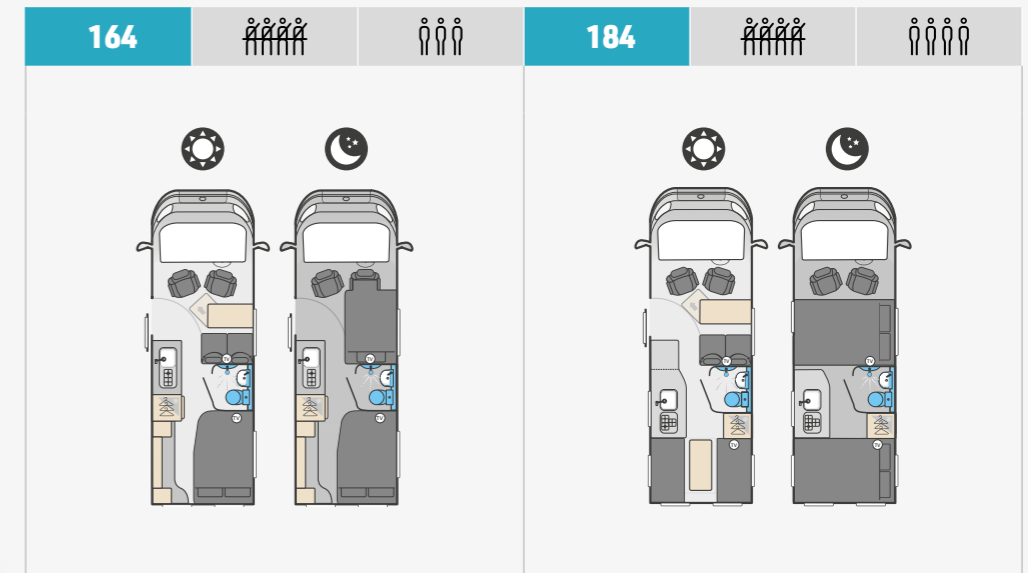


### WALLBOARD





	Standard	Optional	Standard	Optional
Fiat MultiJet diesel engine	140	140 Auto	140	140 Auto
Engine capacity	2.2ltr		2.2ltr	
Engine power	140 Hp @ 3500 rpm	140 HP @ 3500rpm	140 Hp @ 3500 rpm	140 HP @ 3500rpm
Engine torque	350 Nm @ 1400 rpm	380 Nm @ 1400rpm	350 Nm @ 1400 rpm	380 Nm @ 1400rpm
Chassis	Panel Van		Panel Van	
Wheel base	4.04m / 13'3"		4.04m / 13'3"	
Seat belts (inc. driver)	2		4	
Berths (sleeping positions)	2		3	
Overall length	6.00m / 19'8"		6.00m / 19'8"	
Overall body width (mirrors folded)	2.26m / 7'5"		2.26m / 7'5"	
Overall height	2.72m / 8'11"		2.72m / 8'11"	
Optional awning	Thule 6300 3.5m		Thule 6300 3.5m	
Maximum technical permissible laden mass (A)	3500kg		3500kg	
Mass in running order (B)	2912kg	2945kg	2970kg	3003kg
Maximum user payload (A-B)	588kg	555kg	530kg	497kg
Thermal insulation grade	THREE		THREE	
<b>BED SIZES</b>				
Front double				
Front offside single			170cm x 90cm / 54cm / 5'7" x 2'11" / 1'9"	
Rear double	186cm x 188cm / 6'1" x 6'2"		183cm x 135cm / 6'0" x 4'5"	
Rear single offside	188cm x 65cm / 6'2" x 2'2"			
Rear single nearside	188cm x 65cm / 6'2" x 2'2"			



	Standard	Optional	Standard	Optional
Fiat MultiJet diesel engine	140	140 Auto	140	140 Auto
Engine capacity	2.2ltr		2.2ltr	
Engine power	140 Hp @ 3500 rpm	140 HP @ 3500rpm	140 Hp @ 3500 rpm	140 HP @ 3500rpm
Engine torque	350 Nm @ 1400 rpm	380 Nm @ 1400rpm	350 Nm @ 1400 rpm	380 Nm @ 1400rpm
Chassis	Panel Van		Panel Van	
Wheel base	4.04m / 13'3"		4.04m / 13'3"	
Seat belts (inc. driver)	4		4	
Berths (sleeping positions)	3		4	
Overall length	6.36m / 20'11"		6.36m/20'11"	
Overall body width (mirrors folded)	2.26m / 7'5"		2.26m / 7'5"	
Overall height	2.72m / 8'11"		2.72m / 8'11"	
Optional awning	Thule 6300 3.5m		Thule 6300 3.5m	
Maximum technical permissible laden mass (A)	3500kg		3500kg	
Mass in running order (B)	2998kg	3031kg	3033kg	3066kg
Maximum user payload (A-B)	502kg	469kg	467kg	434kg
Thermal insulation grade	THREE		THREE	
<b>BED SIZES</b>				
Front double			176cm x 122cm / 5'9" x 4'0"	
Front offside single	170cm x 90cm / 54cm / 5'7" x 2'11" / 1'9"		170cm x 90cm / 54cm / 5'7" x 2'11" / 1'9"	
Rear double	185cm x 130cm / 6'1" x 4'3"		186cm x 120cm / 6'1" x 3'11"	
Rear single offside				
Rear single nearside				

## GENERAL TECHNICAL NOTES

1. The Maximum User Payload includes:

- a) The conventional load (this is the allowance for passengers)
- b) Essential habitation equipment (items and fluids required for safe and proper functioning of habitation equipment)
- c) Optional equipment (items available from the manufacturer over and above the standard specification)
- d) Personal effects (those items not covered by the above)

2. The Mass in Running Order is the mass of the unladen vehicle including a 75kg allowance for the driver plus engine coolants and 90% of the fuel tank capacity and 1 x 6kg Calor Lite LPG cylinder. The MRO is calculated with the fresh water tank empty. If you travel with water in the fresh water tank then the payload will reduce accordingly.

3. Please take care to ensure that you have allowed for the masses of all items you intend to carry in the motorhome, e.g. passengers, optional equipment, essential habitation equipment and personal effects, such as clothing, food, pets, bicycles, sailboards, sports equipment etc.

4. Warning - under no circumstances should the maximum technical permissible laden mass of this motorhome be exceeded.

### ENGLAND - NORTH WEST

- 01. **Bardsea Leisure**, Ulverston  
bardsealeisure.co.uk
- 02. **Todds Motorhome Specialists**, Preston  
toddsmotorhomes.co.uk
- 03. **Preston Caravans & Motorhomes**,  
prestoncm.co.uk
- 04. **Lowe & Rhodes**, Stoke-on-Trent  
loweandrhodes.co.uk

### ENGLAND - NORTH EAST

- 05. **Kimberley Darlington**  
kimberleycaravans.co.uk

### ENGLAND - YORKSHIRE

- 06. **Wandahome**, South Cave  
caravanbuys.com
- 07. **Ebor Leisure World Group**  
leisureworldgroup.com
- 08. **Lowdham Leisureworld**, Huddersfield  
lowdhams.com

### ENGLAND - WEST MIDLANDS

- 09. **South Hereford Motorcaravan Centre**  
motorcaravancentre.co.uk
- 10. **Salop Leisure**, Shrewsbury  
salopleisure.co.uk
- 11. **Broad Lane Leisure**, Alcester  
broadlane.co.uk
- 12. **Broad Lane Leisure**, Kenilworth  
broadlane.co.uk
- 13. **AEG Motorhomes**, Stourbridge  
aegmotorhomes.co.uk

### ENGLAND - EAST MIDLANDS

- 14. **Don Amott Leisure Ltd**, Derby  
leisurekingdom.co.uk
- 15. **Brownhills Motorhomes**, Newark  
brownhills.co.uk
- 16. **Lowdham Leisureworld**, Nottingham  
lowdhams.com
- 17. **Heart of England Motorhomes**,  
Northampton  
heartofenglandmotorhomes.co.uk

### ENGLAND - SOUTH WEST

- 18. **Alan Kerr Ltd**, Paignton  
alankerr.co.uk
- 19. **Dolphin Motorhomes**, Christchurch  
dolphinmotorhomes.co.uk
- 20. **Highbridge Caravan Centre**, Highbridge  
highbridgecaravans.co.uk
- 21. **West Country Motorhomes**, Brent Knoll  
westcountrymotorhomes.co.uk
- 22. **West Country Motorhomes**, Swindon  
westcountrymotorhomes.co.uk
- 23. **Chelston Motorhomes**, Wellington  
chelstononline.co.uk

### ENGLAND - SOUTH EAST

- 24. **Homestead Caravan Centre**, Weeley  
homesteadcaravans.co.uk
- 25. **Dolphin Motorhomes**, Southampton  
dolphinmotorhomes.co.uk
- 26. **Downtide Caravans & Leisure**, Norwich  
downtide.com
- 27. **Caravan Tech**, Etchingham  
caravantech.co.uk

### SCOTLAND

- 28. **Perthshire Caravans**, Errol  
perthshire-caravans.co.uk

### WALES

- 29. **3 As Caravan Co**, Carmarthen  
3acaravans.co.uk
- 30. **Spinney Flintshire**, Deeside  
spinney.co.uk

### NORTHERN IRELAND

- 31. **Thompson Leisure**, Dromore  
thompsonleisure.com



Make your staycation a  
*safe-cation*

*Where to buy*



**SWIFT**  
CREATING SMILES FOR LIFE

VIEW & DOWNLOAD  
YOUR COMPLETE RANGE  
OF SWIFT BROCHURES HERE  
[swiftgroup.co.uk/downloads](https://swiftgroup.co.uk/downloads)  
OR SCAN THE QR CODE



SCAN FOR MORE

[swiftgroup.co.uk](https://swiftgroup.co.uk)

## DISCLAIMER

This brochure does not constitute an offer by Swift Group Limited (Swift). Swift reserves the right to alter specifications and prices at any time as materials and conditions demand. Distributors and dealers sell Swift products on their own account and not as agents of Swift. Accordingly, they have no authority to bind Swift or to make any representation or undertaking whatsoever on behalf of Swift. All props are for photographic purposes only and are not included in the specification. Models shown may be fitted with optional extras. Issued September 2021.

CARAVANS • MOTORHOMES • HOLIDAY HOMES - MADE IN BRITAIN BY SWIFT

